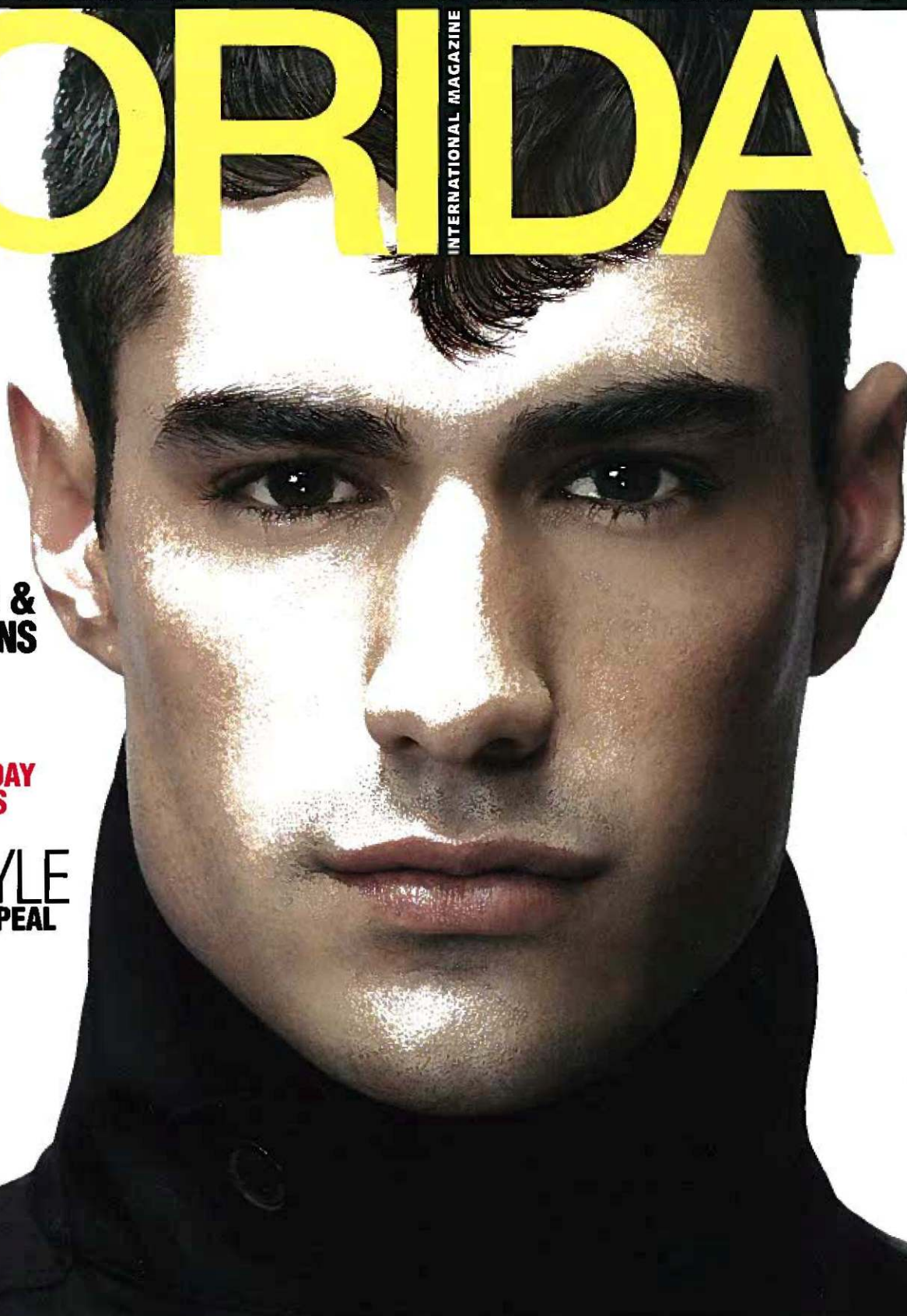


FLORENDA

INTERNATIONAL MAGAZINE



OUT & ABOUT

FLORIDA HOTEL DEALS & GOURMET DESTINATIONS AROUND THE WORLD

WE'VE GOT MALE
COOL GIFTS FOR DAD ON HIS DAY
+ MEN'S FASHION THAT ROCKS

SEASON OF STYLE
INTERIORS WITH SUMMER APPEAL
OUTDOOR FURNITURE
POOLS FOR HOT DAYS

WHAT A CATCH!
SEAFOOD CUISINE & BEST PLACES TO FISH

HOROSCOPE
PAGE 127

JUNE 2008

\$3.95US \$6.95CAN

06>

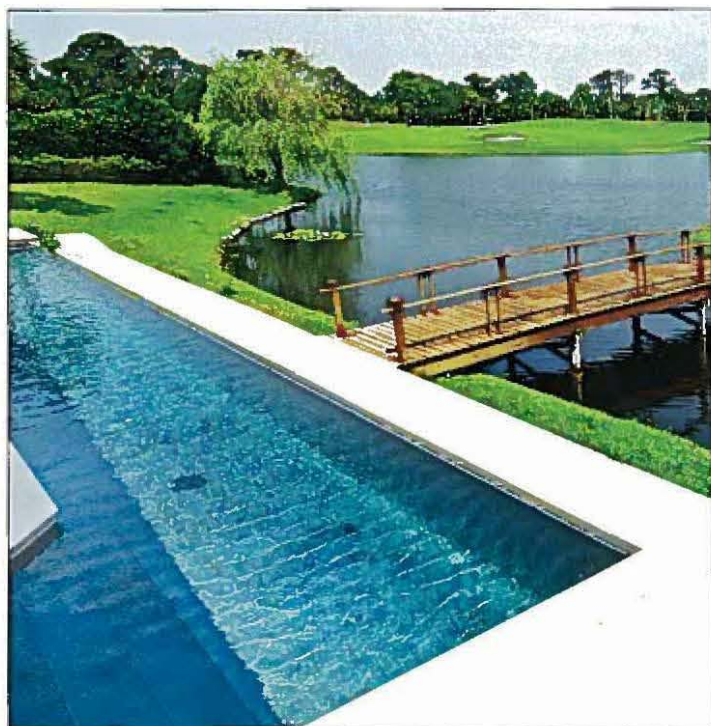
74470-01218-4

floridainternationalmag.com

TRAVEL ISSUE

JET SET 2008

INGENIOUS INFINITY Nothing says Florida living like a pool that seems to spill into a crystal clear blue lake. The owners of this estate in Miramar knew exactly what they wanted, specifically requesting a negative edge pool that would further enhance the view from their patio. The designers at Essig Pools incorporated steps leading up to the swimming pool, which not only provides the proper elevation necessary for the negative edge to disappear into the lake, but also creates a strong focal point, guiding the eye directly to the stunning vista. PHOTO: DAN ESSIG



BRIDGING BODIES OF WATER This Ponte Vedra Beach vanishing edge pool is the product of a complete renovation by Aquatech Pools. A 1970s pool was completely removed to make way for the 50-foot, lap-style addition. With the basin's proximity to the lake, this type of pool was ideal for the footprint's limited space. A footbridge connecting the patio to a small private island used for special occasions offers a unique touch to the lakefront residence and enhances the size and scope of the backyard.

PHOTO: JORDAN CLARKSON

SERVING THE SENSES The Miami homeowners behind this resort-style pool stopped at nothing to make their backyard resemble a tropical oasis like those at Florida boutique hotels. David Font, the designer responsible for both the luscious landscaping and the water features, created a sensory environment that enhances the relaxation process. Visual and auditory elements of design include a beach-entry lagoon-style pool, complete with a cascading water feature, and a vanishing-edge spa that can be serviced from the dry bar. The pool was also designed in harmony with nature: Font blended details like natural stone in the waterfall and various sized beach pebbles around the deck. PHOTO: KEVIN MCKENNA

